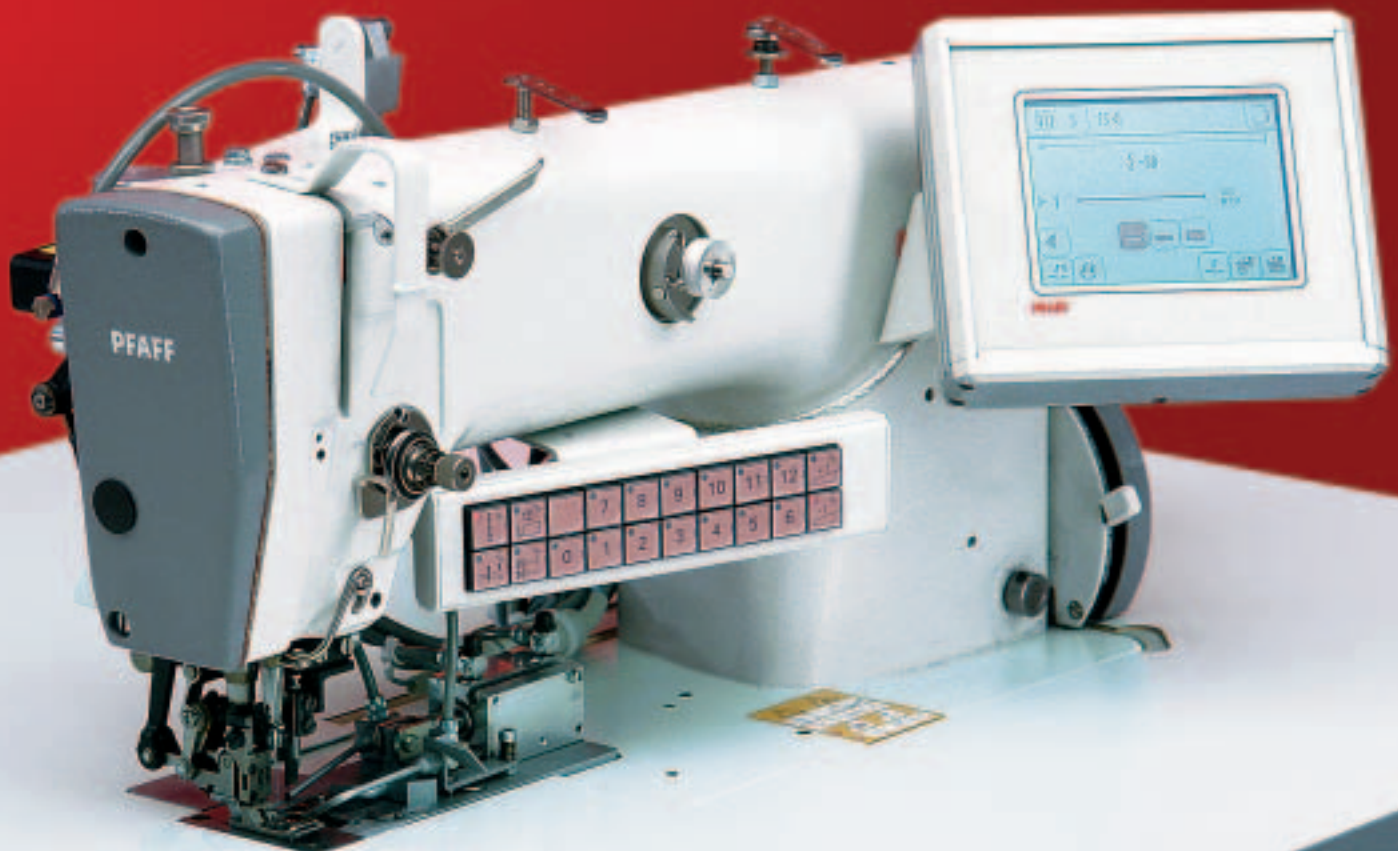


# PFAFF

fine sewing

## 3822

Integrated workplace for run-stitching and trimming the front edges of jackets, coats and costumes



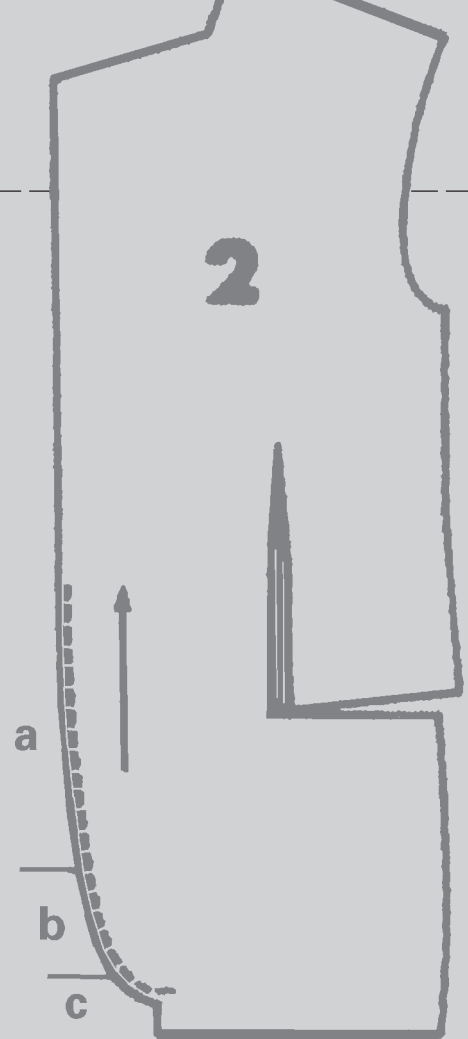
# PFAFF 3822

## Areas of application:

The PFAFF 3822 provides a workplace, which, with the use of modern technology, makes the operation "run-stitch and trim jacket edges" (run-stitch seams) much more efficient and at the same time guarantees a sewing quality which can be reproduced at any time.

Heavy coat materials, jackets and costumes of different fabrics, including silk and micro-fibres, can be sewn at a high quality level with the PFAFF 3822.

Feather-edge seams are a special quality feature in the manufacture of clothing (tailored edge). The PFAFF 3822 masters this special work step without any effort and convinces with its high-quality sewing and simple operation.



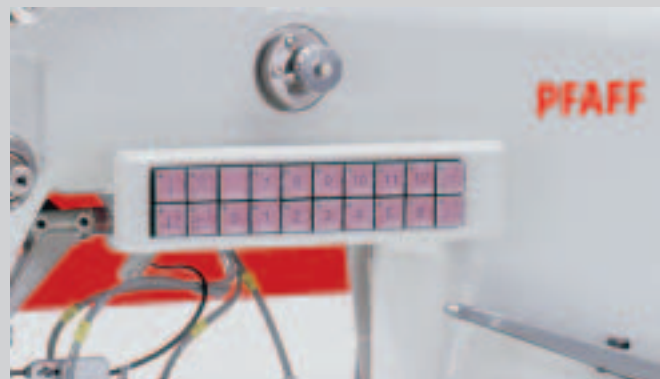
## Equipment features:

### The sewing head

- The PFAFF 3822 is equipped with the ultra high-speed sewing unit PFAFF 487. For applying fullness the differential feed unit can be activated both manually (keyboard) and automatically (sewing program).
- The floating foot supports the even distribution of fullness and guarantees smooth seams.
- Back-tacking device for reverse sewing or stitch condensation.

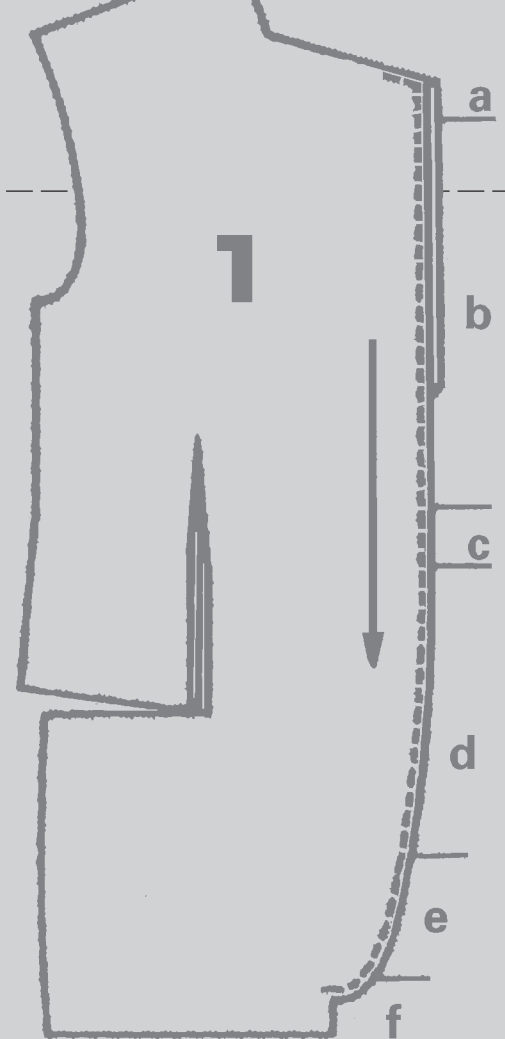
### The keyboard

- On a keyboard with 20 keys, 12 keys are provided for the application of fullness. With keys 7 – 12 fullness is applied in the top ply and with keys 1 – 6 in the bottom ply.
- By operating two adjacent keys simultaneously, intermediate amounts of fullness can be selected.
- By operating the knee switch, it is possible to change between flat sewing and gathering as required.
- Further keys are provided for engaging stitch condensation, back-tacking and edge trimming functions.



## Advantages:

- As fullness can be applied to the top or bottom ply, the usual basting and clamping is not necessary.
- Precise reproducible application of fullness at any time with the use of the keyboard.
- Smooth seams due to the use of a floating presser foot.
- Exact curves at the tip of the lapels on double-breasted jackets by switching to stitch condensation.
- Flat, perfect edges with no pressure marks when using the graded edge trimmer on the sub-classe -2/44.
- Storing of seam sequences in conjunction with the touch-screen control panel on sub-classes -2/42 and -2/44. This guarantees identical processing of different styles and sizes. And the machine can be adapted to a variety of materials.



### The control panel

- Basically the PFAFF 3822 is equipped with a touch-screen control panel.
- Seam parameters such as amounts of fullness or the number of stitches are combined in one program.
- Programme selection:
  - 0 = manuel sewing
  - 1+2 = sewing with installed programmes
  - 3-49 = programmable sewing

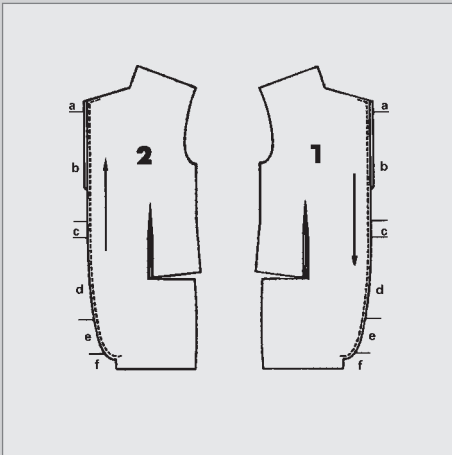
### Edge trimming device

The PFAFF 3822 can be supplied with 2 different devices:

- 5.0 mm trimming margin on both material plies: -2/42
- Feather edge cutting (3.5 mm on the top and 6.5 mm on the bottom material ply): -2/44



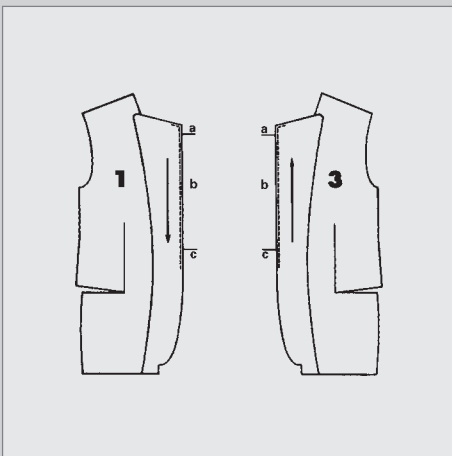
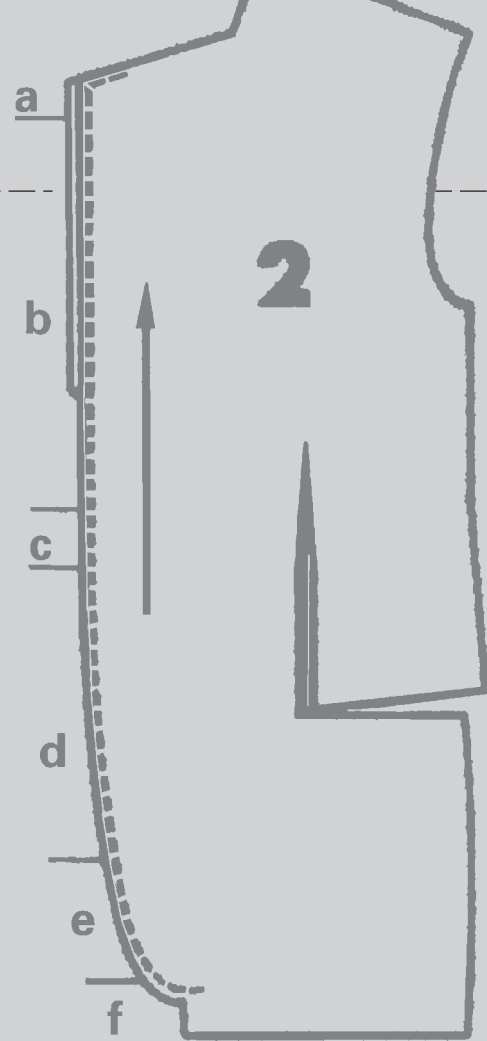
Work method:



**Sewing on front section**

- a** fullness on lapel edge from below
- b** flat sewing
- c** fullness at waist from below
- d** flat sewing
- e** fullness along course of the edge from above
- f** flat sewing

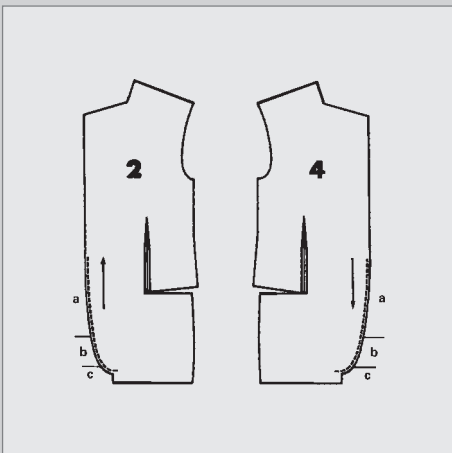
Excess facing material on the lapel is used for positioning/matching checks or stripes.



**Combined sewing on facings and front section**

- a** fullness on lapel edge from above
- b** flat sewing
- c** fullness at waist from above

By sewing on the front facing it is easy to recognize the run of checks and stripes.

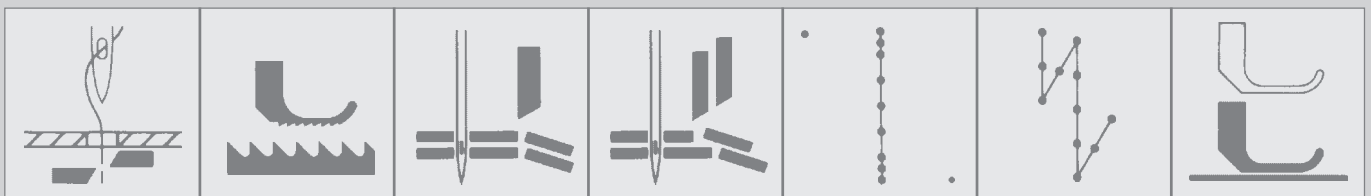


- a** flat sewing
- b** fullness along course of the edge from above
- c** flat sewing

# PFAFF 3822

Run-stitching and trimming jacket edges:

Standard equipment	-2/42	-2/44
Product number	901-3822-021/001	901-3822-020/001
Edge trimmer, trimming margin 5 mm	✓	
Feather edge trimmer trimming margin 6.5 and 3.5 mm		✓
Touch-screen control panel (T1) for creating and storing up to 199 sewing programs	✓	✓
Differential feed for applying fullness on top or bottom	✓	✓
Thread trimmer -900/51	✓	✓
Seam backtacking or stitch condensation	✓	✓
Automatic presser foot lift -910/04	✓	✓
20-key keyboard for manual selection of fullness amounts (6 keys each for fullness at top or bottom)	✓	✓
Brushless servo-drive	✓	✓



# PFAFF

fine sewing

## Specifications:

### **Max. speed:**

4,000 s.p.m. (-2/42)

3,200 s.p.m. (-2/44)

### **Max. stitch length:**

3.5 mm (-2/42)

2.5 mm (-2/44)

### **Max. material thickness:**

7.0 mm

### **Trimming margin:**

5.0 mm (-2/42)

6.5 x 3.5 mm (-2/44)

### **Power rating:**

1.2 kW

### **Working air pressure:**

6 bar

### **Approx. dimensions:**

Length: 1,360 mm

Width: 950 mm

Height: 1,120 mm

The machine is equipped with finger-guard,  
belt- and take-up lever guards as standard.

### Hotlines:

Technical service: +49-175/2243-101

Application consultancy: +49-175/2243-102

Spare-parts hotline: +49-175/2243-103



### **PFAFF Industrie Maschinen AG**

- Postfach 3020  
67653 Kaiserslautern
- Königstr. 154  
67655 Kaiserslautern

Telefon: +49-631/200-0

Telefax: +49-631/17202

Internet: [www.pfaff-industrial.com](http://www.pfaff-industrial.com)

Printed in Germany  
engl.  
296-12-18362 07/06