



PEGASUS®

# W600

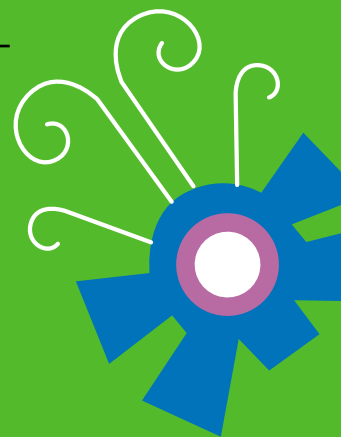
Cylinder bed,  
Interlock stitch machines.



# Full line of subclasses offered just by a Quality Maker.

A wide variety of subclasses that are suitable for sewing tubular goods of knit fabrics, technically responding to various materials and operations, thus achieving high efficiency and quality.

With excellent ease of operation, productivity dramatically increases.



## Point 1 Full line of subclasses.

Thanks to this feature, Pegasus'W600 Series sew various kinds of materials from light and difficult-to-sew fabrics for underwear to heavy weight ones for outerwear with designs.

## Point 2 Equipped with a cylinder bed.

A circumference of 270mm to sew small tubular goods, such as neck and/or sleeve openings of children's wear.

## Point 3 All subclasses equipped with upper and lower needle/thread cooler devices(HR) that protect the fabrics and threads against heat.

Heat is generated on the needle due to friction when the needle penetrates the fabric at high speeds. This causes thread breakage and/or stitch skipping. This series is equipped with HR device that always prevents heat generation on the point of the needle, allowing the thread to move smoothly and producing the stitches uniformly.





## W600 Specifications in common

- Max. speed 6,000 rpm
- Stitch length 0.9mm - 4.5mm
- Needle space 2-needle machines (3.2mm, 4.0mm, 4.8mm, 5.6mm, 6.4mm)  
3-needle machines (5.6mm, 6.4mm)  
4-needle machines (6.0mm)
- Presser foot lift Up to 5.9mm
- Differential feed ratio 1: 0.6 - 1: 1.5

Note) The details of the specs. vary by subclass.

### Point 4 Forms ideal needle thread loops.

Timing at which the needle threads are supplied can be adjusted in accordance with the needle bar motion, so ideal needle thread loops are formed according to the characteristics of the thread to be used.

### Point 5 Equipped with movable needle guard that prevents stitch skipping.

This needle guard accurately holds the needles at the moment the lower looper enters the needle thread loops, preventing stitch skipping. Prevents the needle and the looper from being damaged. In addition, timing at which the needle guard receives the needles can be adjusted according to the thread to be used.



# Other Features

## ■ Dial type stitch length adjustment.

You can adjust the stitch length easily with one hand while checking the scale.



## ■ Covers that are widely opened.

The front and side covers are widely opened so that you can easily adjust and clean each part.



## ■ Easy-to-thread the looper thread take-up with the looper thread.

Pressing the push button at a touch pops out the thread guide bracket for the looper thread take-up.

Threading the looper thread take-up is easy.



## ■ Differential feed ratio adjustment.

The differential feed ratio adjustment lever is located to the right of the machine, so you can easily adjust the differential feed ratio at the operator's stage.

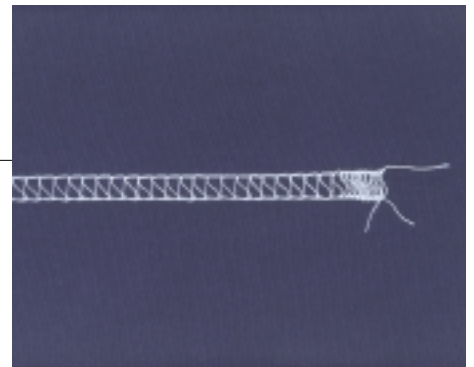
## ■ An interlock between the main and differential feed dogs.

Thanks to this interlock, if the stitch length is changed, the differential feed ratio will always remain fixed.



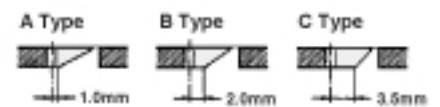
## ■ Condensed stitching device.

To prevent the seams from unraveling the machine can use this device that produces condensed stitches at the end of sewing.



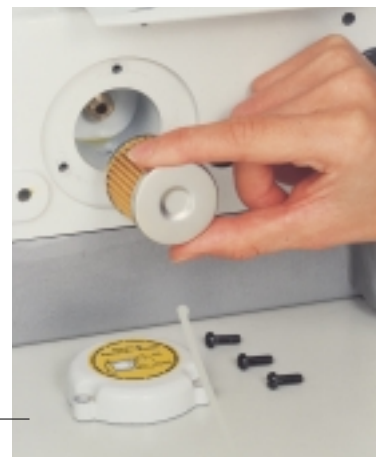
## ■ Three types of needle plate fingers are available.

You can select a needle plate from among three types of needle plates that have different shapes of needle plate fingers according to the fabric or stitch length.



## ■ The needle thread retainer serves as both movable and fixed types.

The needle thread retainer can be changed from a movable/fixed to fixed/movable type by changing the position according to the thread to be used. Thanks to this feature, the machine forms ideal needle thread loops if you use more flexible threads.



## ■ Equipped with an oil filter.

This oil filter holds back any dust in the oil, so the clean oil always circulates inside the machine. Replacing the filter can be easily done from the outside.



## ■ Force-feed lubrication/drain system.

Each part on the machine is always forcibly lubricated using a pump. Oil circulation during sewing can be effortlessly checked from the oil sight window on the arm cover (top). The needle bar and parts around the cylinder bed are forcibly lubricated using a Trochoid pump. Oil level can be easily checked from the oil sight window on the right under the bed.



# W600 Devices



## ■ Thread trimmer (UT)

To cut the threads you simply press the treadle with heel. No scissors are needed. This feature allows you to concentrate entirely on sewing, dramatically increasing production efficiency. If the UT includes the capability of lifting the presser foot, the presser foot is automatically raised after the threads are trimmed. Then you can immediately place the next fabric.

**Underbed thread trimmer**

**Top cover thread trimmer**



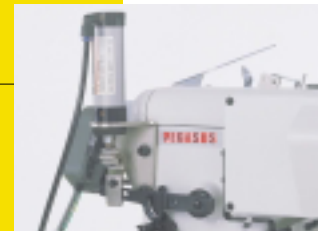
## ■ Condensed stitching device (MS)

Automatically produces condensed stitches at the end of sewing without stopping the machine. No unraveling occurs. Eliminates the need for bartacking and provides high quality products.



## ■ Presser foot lift (PL)

Reduces operator fatigue. Pressing the treadle actuate the air cylinder to raise the presser foot. As for PL device, only the pneumatic type is set up.



## ■ Tape/Thread chain cutter (TK/AT)

Devices that trim the tape and/or thread chain when sewing is completed. Eliminates for the need for cutting the thread chain by hand, such as using a Two types are available. There are two types of driving methods available, pneumatic and electric.



**Manual type : TK**

**Automatic type : AT**



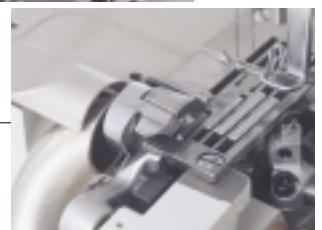
## ■ Open/Close type of hemming guide (HG)

Provides uniform hem width in a hemming operation. Simplifies the operation, thus increasing quality of sewn products. In addition, the hemming guide can be opened/closed, so positioning the fabric is easy.



## ■ Fabric edge trimmer (FT)

Trims the fabric edge during sewing, providing neatly finished products.



## Lace/Elastic feeder (MD)

Feeds lace or elastic according to the feeding amount of the fabric, so the lace or elastic is fed constantly if sewing speed is changed. Thanks to this feature, beautifully finished sewn products are obtained.



## Rear puller (RP)

Forcibly pulls the fabric from behind the needle drop hole, so that difficult-to-feed fabrics can be smoothly sewn.



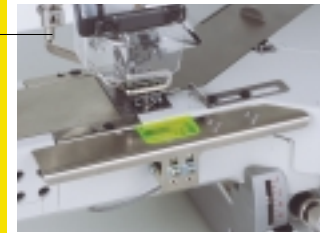
## Thread break detector (TW)

Detects thread breakage during sewing. The machine automatically stops. Reduces trouble caused by thread breakage and saves time and labor to restore the machine.



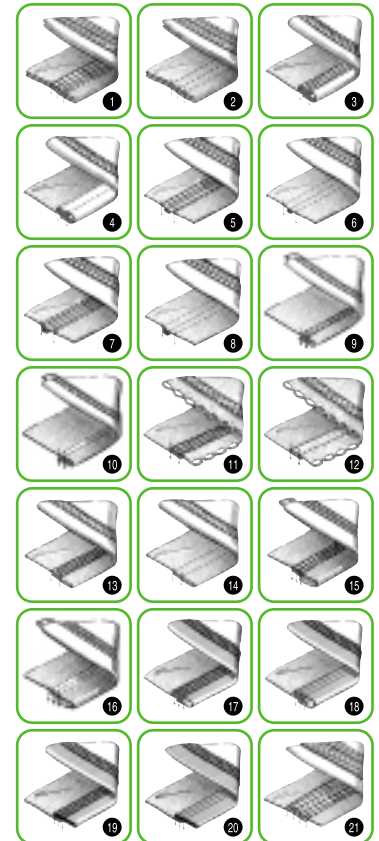
## Bottom fabric illuminating light

Since this light illuminates the fabric from underneath, the fabric edge is visible to you in a hemming operation. Hemming difficult-to-sew fabrics is easy. Thanks to this feature, sewn products are stabilized in quality.



## W600 Series Subclasses

seam	Type of machine	Model	No. of needles	No. of threads	Machine speed(ppm)	Equipped with
	Plain seaming light to medium weight fabrics					
1 2	Available for a wide range of applications using various guides and/or attachments	W664-01	2 · 3	3~5	5,500~6,000	
	Binding tape on light to medium weight fabrics					
3 4	Binding tape on neck openings of underwear or T-shirts	W664-02	2 · 3	3~5	6,000	
	Covering light to heavy weight fabrics					
5 6 7 8	Covering overlock seams on T-shirts or sweat shirts	W664-03	2 · 3	3~5	5,000~6,000	
7 8 9 10	Covering overlock seams, Hemming pre-attached elastic	W664-71	3	4~5	6,000	
	Attaching elastic lace					
11 12	Attaching elastic lace to women's underwear	W664-05	2 · 3	3~5	5,500	Fabric edge trimmer
	Hemming light to medium weight fabrics					
13 14	Hemming sleeves and/or bottoms of T-shirts, polo shirts	W664-08	2 · 3	3~5	6,000	
		W664-35	2 · 3	3~5	5,500	Fabric edge trimmer Open/close type of hemming guide (not included with some machines)
	Hemming waists and simultaneously inserting elastic on light to medium weight fabrics					
15 16	Inserting elastic into tubular goods, such as sweat pants, nightwear, etc.	W664-30	2 · 3	3~5	5,000	Open/close type of hemming guide Rear puller
		W664-34	2 · 3	3~5	5,000	Fabric edge trimmer Open/close type of hemming guide Rear puller
	Attaching spun knit elastic to light to medium weight fabrics					
17 18	Attaching spun knit elastic to waists of briefs	W664-32	3	4~5	5,000	Open/close type of hemming guide Rear puller (not included with some machines)
	Attaching flat elastic to tubular goods of light to medium weight fabrics					
19 20	Attaching flat elastic to tubular goods, such as waists of briefs	W664-33	3	4~5	5,000	Fabric edge trimmer Rear puller
	Attaching and flatseaming spun knit elastic, with fabric trimmer					
	Horizontally installed on the presser foot					
21	Attaching spun knit elastic to briefs and flatseaming	W664-51	4	6	4,200	
	Hemming waists and simultaneously inserting elastic					
15 16	Hemming waists and simultaneously inserting flat elastic on briefs, panties, swimsuits, etc.	W664-81	2 · 3	3~5	5,000	Lace/elastic feeder Rear puller



# PEGASUS®

**PEGASUS SEWING MACHINE MFG.CO.,LTD.**  
 5-7-2,Sagisu,Fukushima-ku,Osaka 553-0002,Japan  
 Phone:81-6-6458-4739 Telefax:81-6-6454-8785  
<http://www.pegasus.co.jp>

※The specification and/or appearances of the equipment described in this catalog is subject to change because of modification without previous notice.

